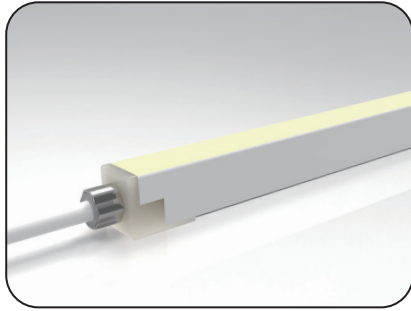
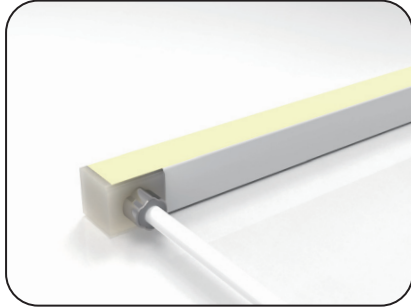
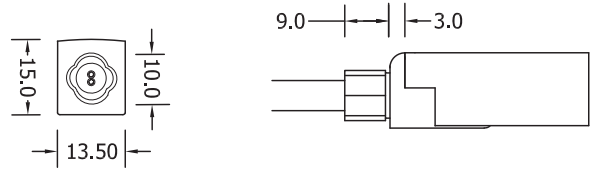


# T10 Configuration and Accessories

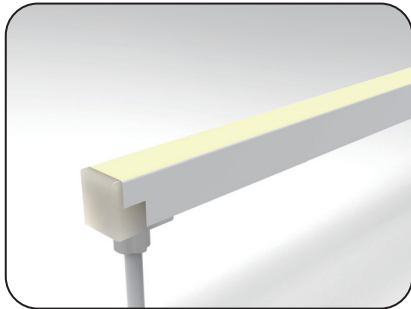
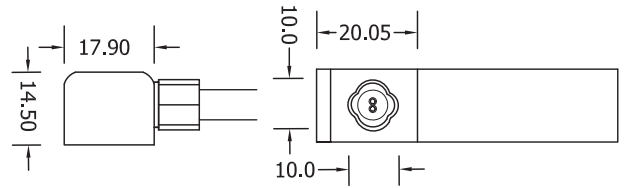
Mold Injection Connector (IP68 Factory Assembly Only)



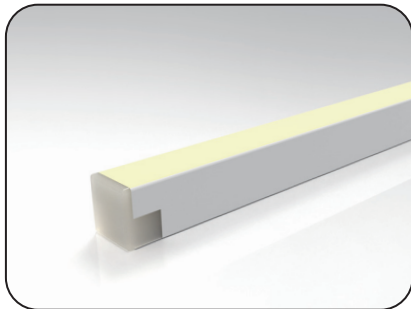
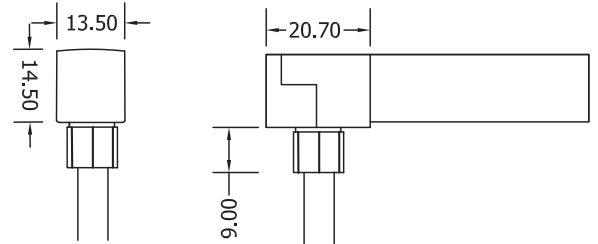
Direct Entry Connector  
 MJ-10-A-D01/02/03  
 MJ-10-A-D01SM  
 MJ-10-A-D02SF  
 MJ-10-A-D03SFM



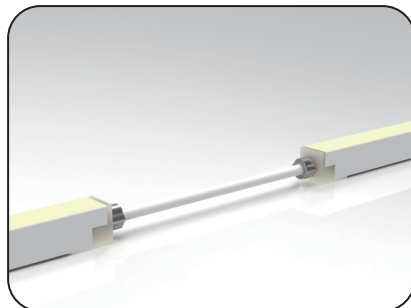
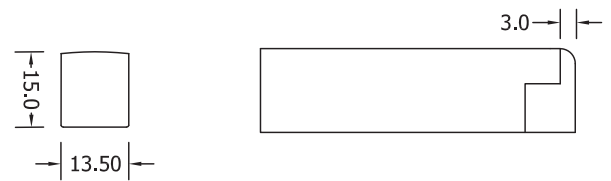
Side Entry Connector  
 MJ-10-A-S01/02/03  
 MJ-10-A-S01SM  
 MJ-10-A-S02SF  
 MJ-10-A-S03SFM



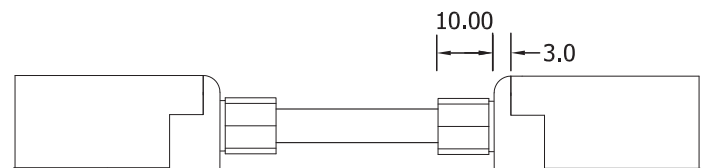
Bottom Entry Connector  
 MJ-10-A-S01/02/03  
 MJ-10-A-S01SM  
 MJ-10-A-S02SF  
 MJ-10-A-S03SFM



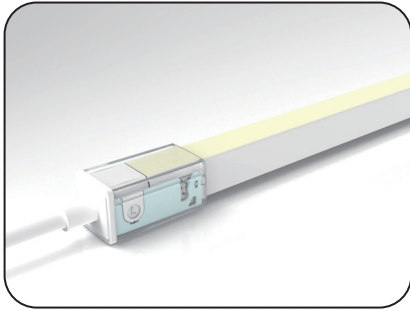
End Cap



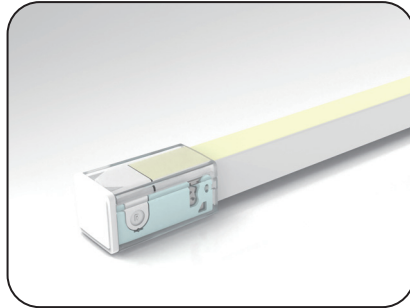
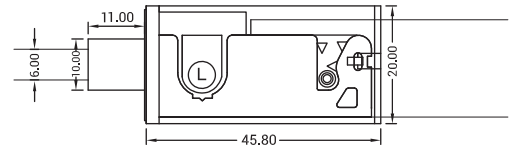
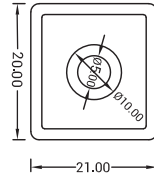
Jumper  
 MJ-10-A-D-JC



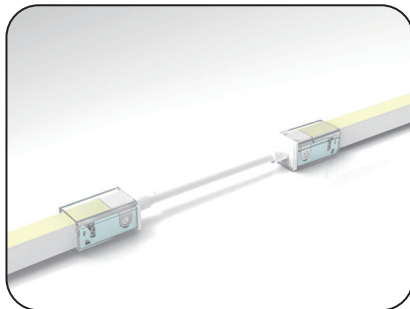
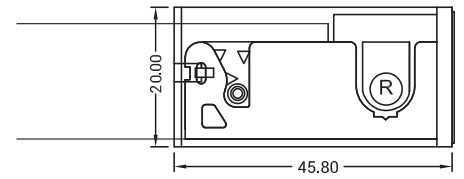
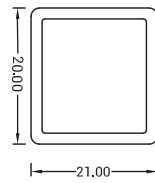
# T10 Configuration and Accessories



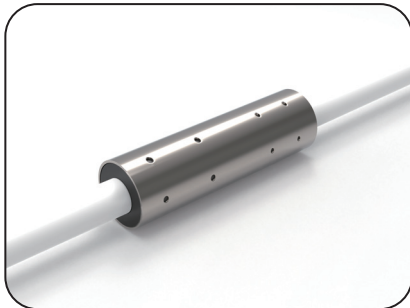
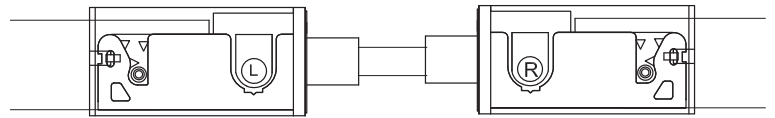
DIY Snap Connector  
DIY-SN-FR-10-D-01/02-A



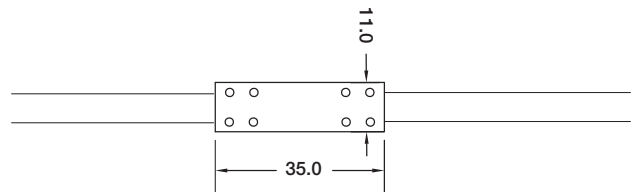
DIY Snap End Cap  
DIY-SN-END-10-D-01/02



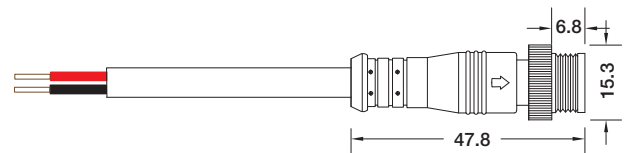
DIY Snap Connector Jumper  
DIY-SN-FR-10-A-D-JC



Waterproof Interrupter

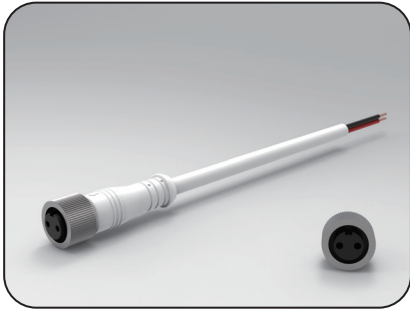


Male Connector  
SYZ-M12-M-2C-075-W

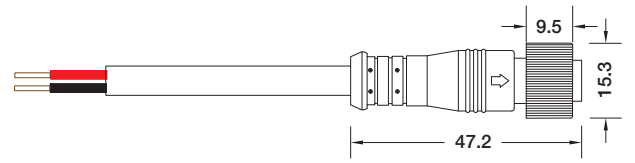


# T10 Configuration and Accessories

---

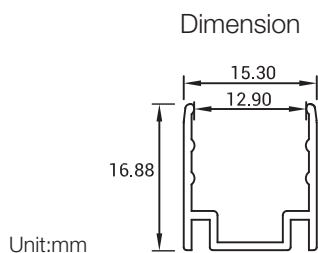
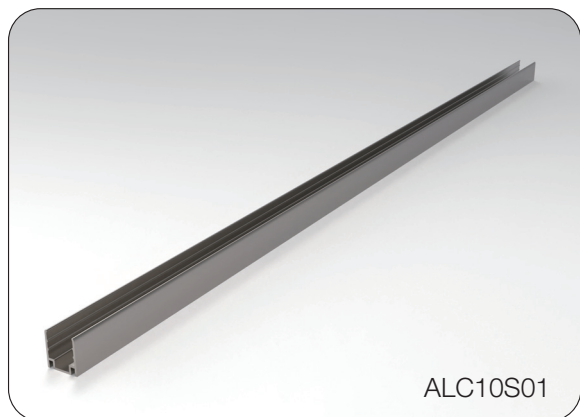


Female Connector  
SYZ-M12-F-2C-075-W

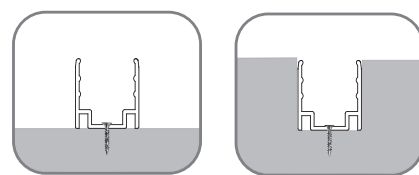


# LED linear Flex Mounting Channel

## 1. Aluminum Channel

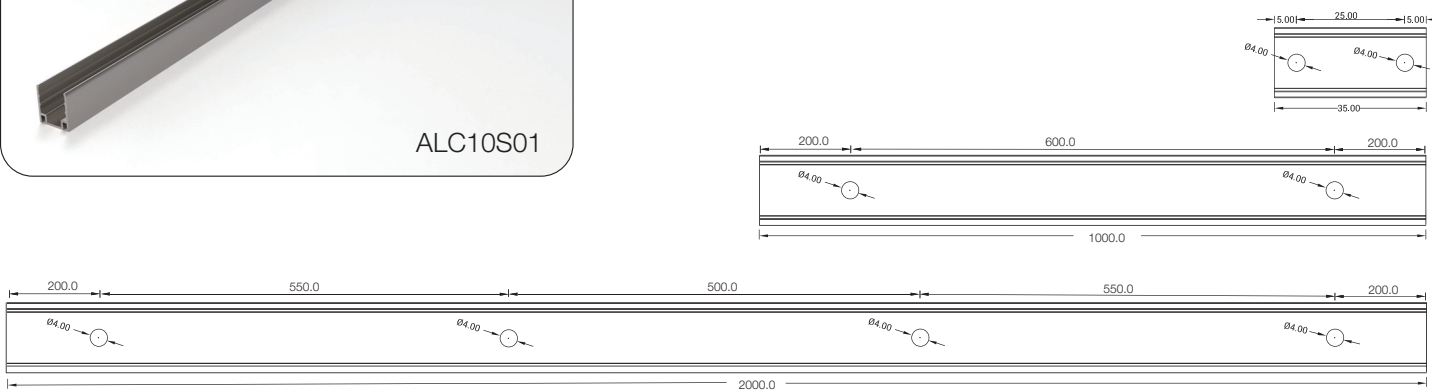


Installation Way



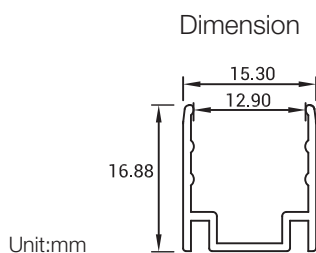
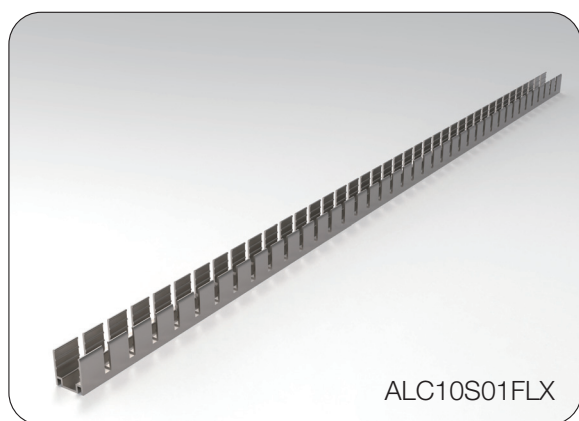
Surface Mounted

Recessed

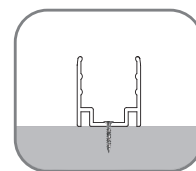


Model	W x H(mm)	Standard Length	Screw Holes	Holes Numbers	Suitable Product
ALC10S01	15.3*16.88	35mm	Ø4.0mm	2	T10, SF10
		1000mm	Ø4.0mm	2	T10, SF10
		2000mm	Ø4.0mm	4	T10, SF10

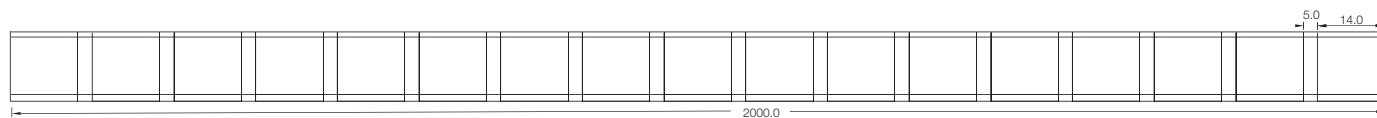
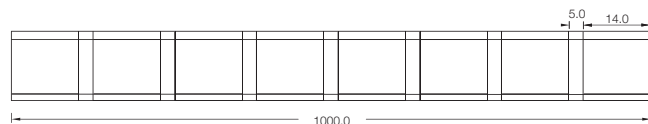
## 2. Flexible Aluminum Channel



Installation Way



Surface Mounted



Model	W x H(mm)	Standard Length	Suitable Product
ALC09S01FLX	15.30*16.88	1000mm	T10, SF10
		2000mm	T10, SF10

# LED linear Flex Packing Details

## Standard: Carton ( Paper Reel Inside)



Product	Max.Length	Carton Size	Net Weight	Gross Weight
S15/SF15	30m	34*34*18cm	12kg	13.6kg
T16/SF16	20m	34*34*18cm	8.6kg	10.2kg
T17/SF17	20m	34*34*18cm	8.6kg	10.2kg
T18/SF18	20m	34*34*18cm	8.6kg	10.2kg
S21/SF21	20m	34*34*18cm	10.4kg	12.0kg
T10/SF10	30m	34*34*18cm	9.6kg	11.2kg
S09/SF09	35m	34*34*18cm	5.8kg	7.4kg
T08/SF08	30m	34*34*18cm	7.2kg	8.8kg
T06/SF06	30m	34*34*18cm	7.2kg	8.8kg

## Custom: Carton ( White Box+ Plastic Plate Inside)



Product	Package 1 Dimension	Length	Gross Weight	Package 2 Dimension	Length	Gross Weight
S15/SF15	38*38*3cm	5m	2.5kg	45*55*3cm	10m	5kg
T16/SF16	38*38*3cm	5m	2.6kg	51*61*4cm	10m	5.2kg
S17/SF17	38*38*3cm	5m	2.6kg	51*61*4cm	10m	5.2kg
T18/SF18	38*38*3cm	5m	2.6kg	51*61*4cm	10m	5.2kg
S21/SF21	38*38*3cm	5m	3.1kg	51*61*4cm	10m	6.2kg
T10/SF10	38*38*3cm	5m	2.0kg	45*55*3cm	10m	4kg
S09/SF09	38*38*3cm	5m	1.5kg	45*55*3cm	10m	3kg
T08/SF08	38*38*3cm	5m	1.5kg	45*55*3cm	10m	3kg
T06/SF06	38*38*3cm	5m	1.5kg	45*55*3cm	10m	3kg