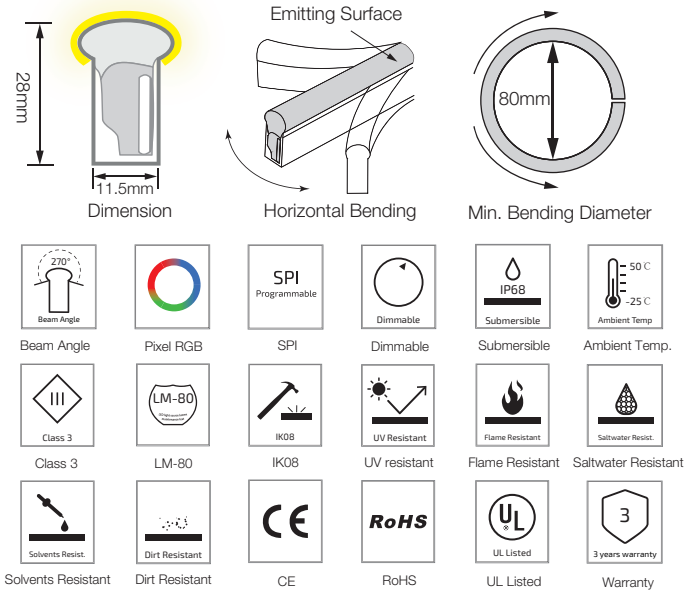
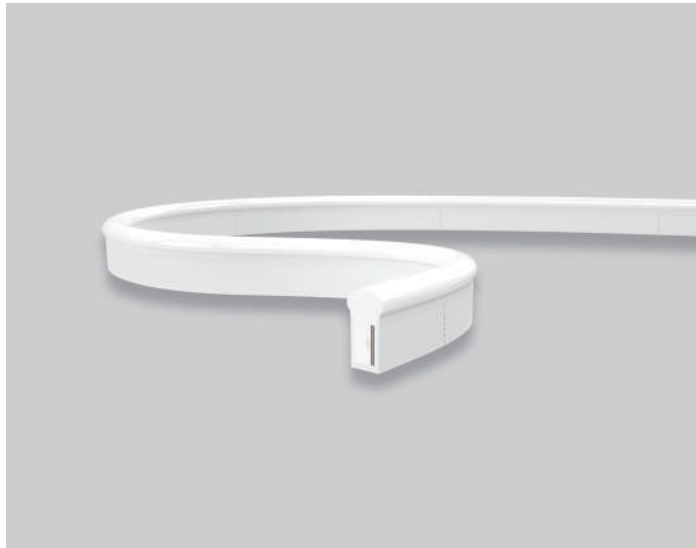


# SF21 SPI Pixel Chasing RGB LED Linear Flex

## SF21-24V-5050-70-SPI3-RGB

### Specification



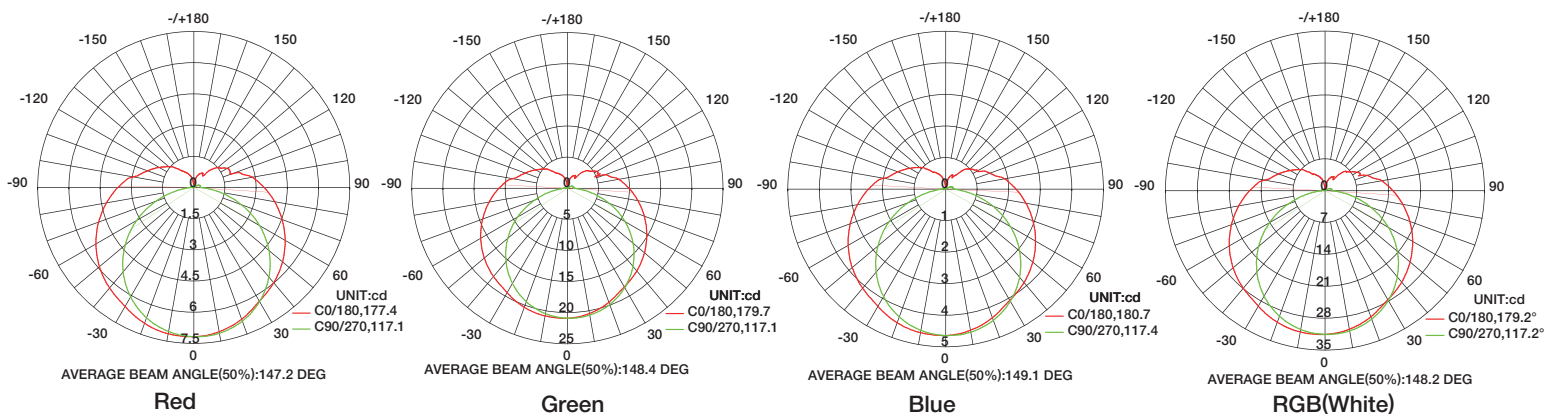
### Technical Parameters

Electrical	
Input Voltage	24V DC
Power Consumption	15W/m
Physical	
LED Count	70 LEDs/m
Cutting Unit	7 LEDs
Cutting Unit Length	100mm
Minimum Bend Diameter	80mm
Output	
LED Light	Epistar SMD LED 5050
Color	RGB
Working Mode	SPI
Pixels Quantity	10 Pixels/m
IC Chips	UCS8903
Max Run Length*	
Single Feed	8M
Double Feed	16 M
Beam Angle	270°
Lumen Maintenance	70,000 Hours L70 @ 25°C 50,000 Hours L70 @ 50°C

Emitting Color	Lumen Output
Red	35lm/m
Green	110lm/m
Blue	20lm/m
RGB(White)	100lm/m

Temperature Ranges	
Installation	0°C to 50°C
Operating	-25°C to 50°C
Dependability	
Warranty	3 Years Warranty
IP Rating	IP68 Wet location submersible <2m

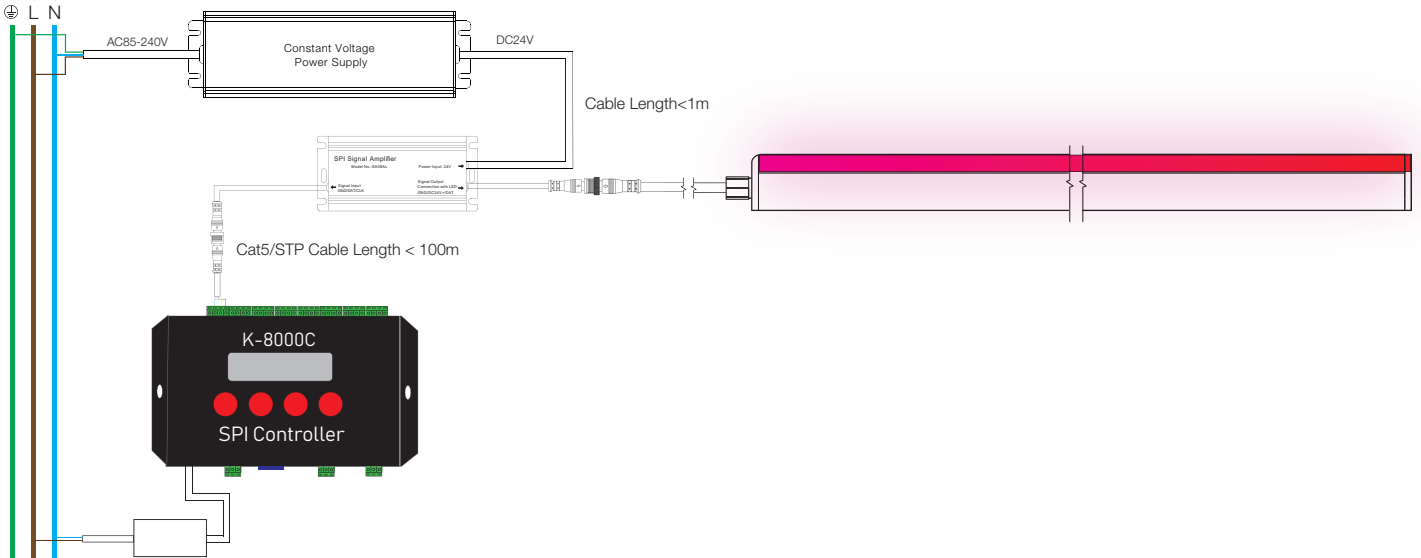
### Illuminance Distribution



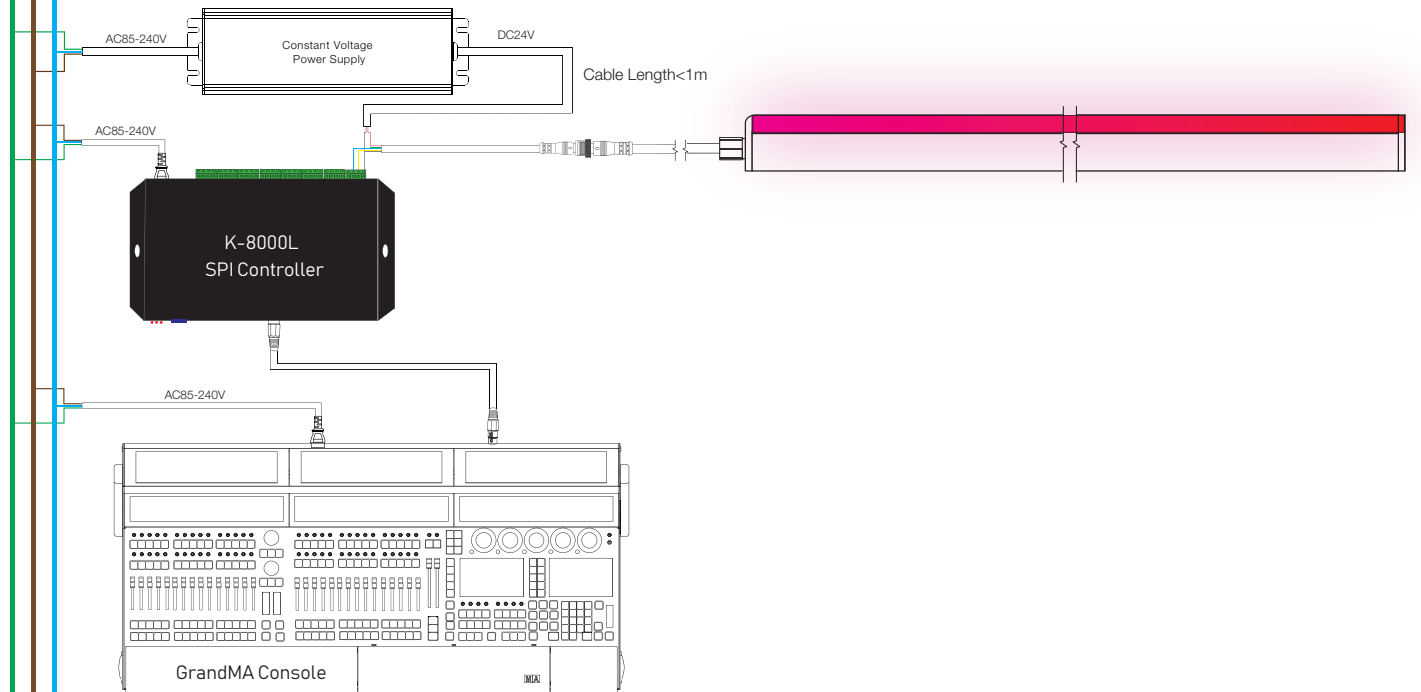
# SF21 SPI Pixel Chasing RGB LED Linear Flex

FG (Green)  
ACL (Brown)  
AC/N (Blue)

## ① Standard SPI Control



## ② GrandMA Console Control



## ③ Madrix Control

