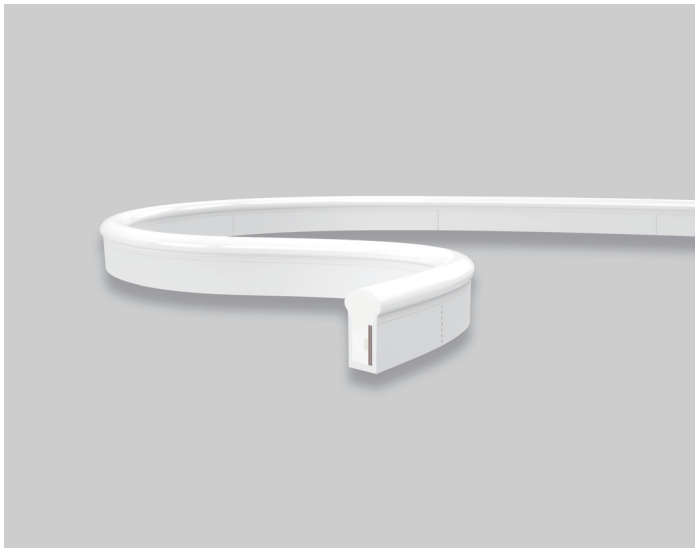


SF21 Multi Color RGBW Silicone LED Linear Flex

SF21-24V-5050-60-RGBW

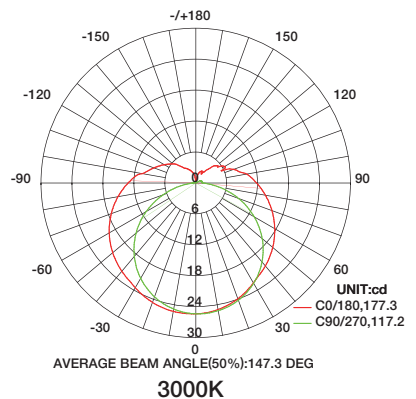
Specification



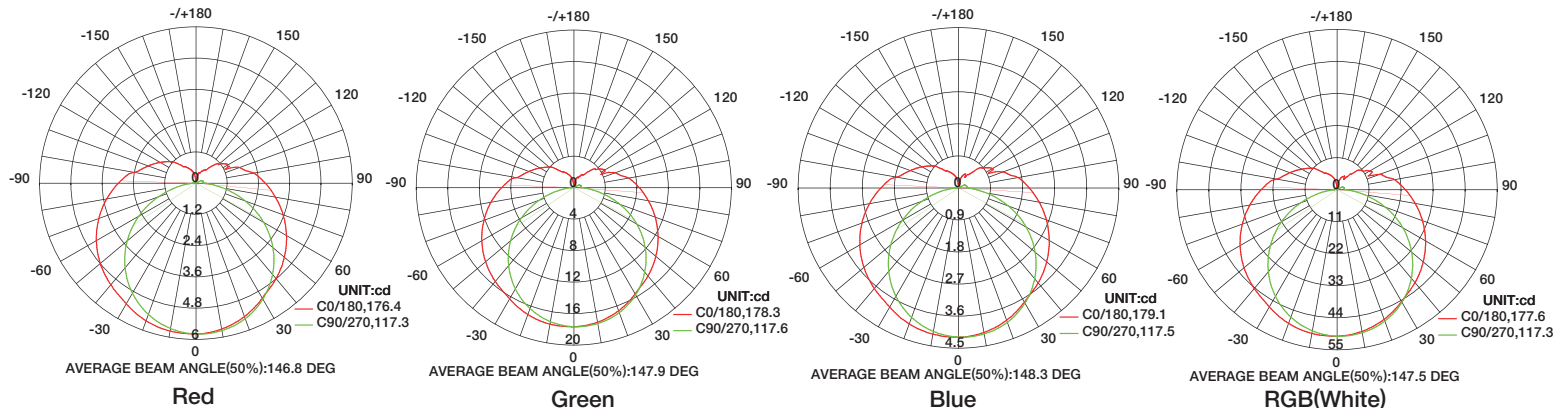
Technical Parameters

| Electrical | |
|-----------------------|--|
| Input Voltage | 24V DC |
| Power Consumption | 17W/m |
| Physical | |
| LED Count | 60 LEDs/m |
| Cutting Unit | 6 LEDs |
| Cutting Unit Length | 100mm |
| Minimum Bend Diameter | 80mm |
| Output | |
| LED Light | Epistar SMD LED 5050 |
| Color | RGBW(2700K/3000K/4000K/5000K) |
| Max Run Length* | |
| Single Feed | 8M |
| Double Feed | 16M |
| Beam Angle | 270° |
| Lumen Maintenance | 70,000 Hours L70 @ 25°C 50,000 Hours L70 @ 50°C |
| Temperature Ranges | |
| Installation | 0°C to 50°C |
| Operating | -40°C to 55°C |
| Dependability | |
| Warranty | 5 Year Warranty |
| IP Rating | IP68 Wet location submersible <2m |

| Emitting Color | Lumen Output |
|----------------|--------------|
| Red | 22lm/m |
| Green | 75lm/m |
| Blue | 15lm/m |
| RGB(White) | 220lm/m |
| 3000K | 100lm/m |



Illuminance Distribution



SF21 Multi Color RGBW Silicone LED Linear Flex

Connection

