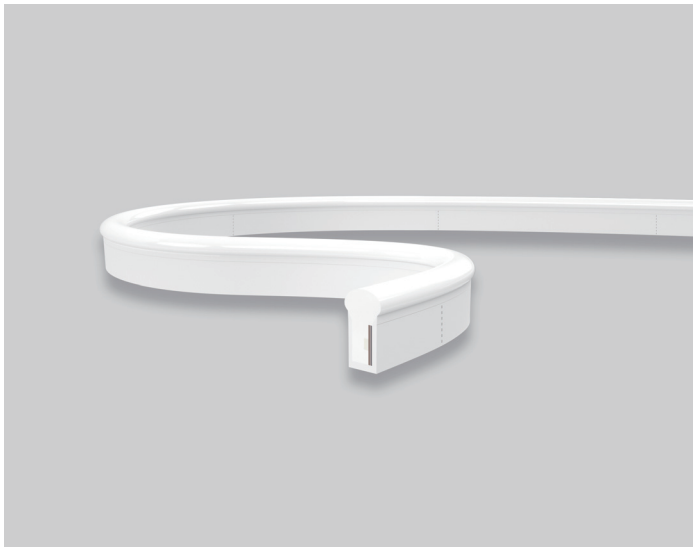


SF21 Mono Color Silicone LED Linear Flex

SF21-24V-2835-72-CG-2200K-6500K

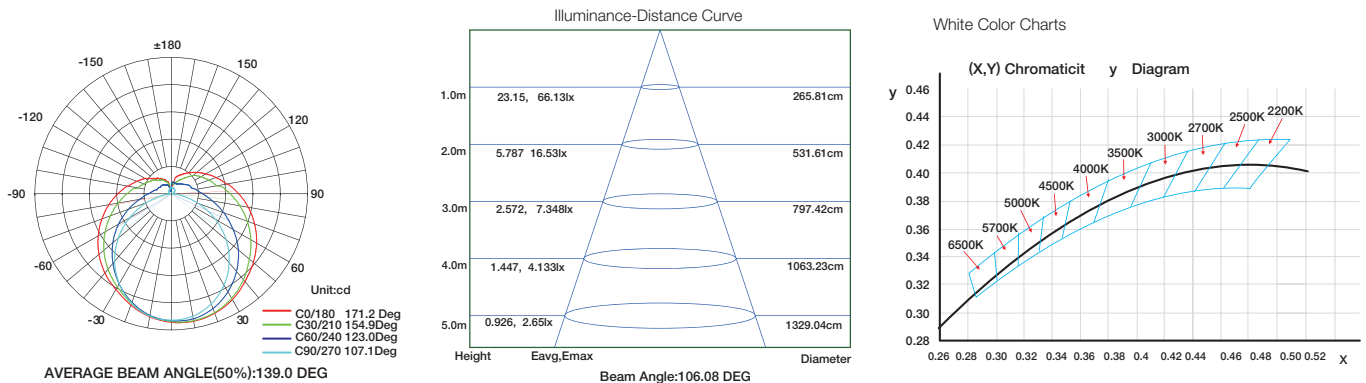
Specification



Technical Parameters

Electrical		Optional Color		Lumen Output	
Input Voltage	24V DC (Built In Constant Current)		2200K(2238±102K)	260lm/m	
Power Consumption	10W/m		2700K(2725±145K)	260lm/m	
Physical			3000K(3045±175K)	260lm/m	
LED Count	72 LEDs/m		3500K(3465±245K)	300lm/m	
Cutting Unit	6 LEDs		4000K(3985±275K)	300lm/m	
Cutting Unit Length	83.3mm		4500K(4503±243K)	330lm/m	
Minimum Bend Diameter	80mm		5000K(5029±283K)	330lm/m	
Output			6500K(6532±510K)	330lm/m	
LED Light	Epistar SMD LED 2835		Green(520-530nm)	180lm/m	
CRI	>80, >90		Blue (520-530nm)	28lm/m	
Max Run Length*			Lemon Yellow(520-530nm)	220lm/m	
Single Feed	15M		Pink(630-645nm)	150lm/m	
Double Feed	30 M				
Beam Angle	270°				
Lumen Maintenance	70,000 Hours L70 @ 25°C 50,000 Hours L70 @ 50°C				
Temperature Ranges					
Installation	0°C to 50°C				
Operating	-40°C to 55°C				
Dependability					
Warranty	5 Year Warranty				
IP Rating	IP68 Wet location submersible <2m				

Illuminance Distribution



SF21 Mono Color Silicone LED Linear Flex

Connection

