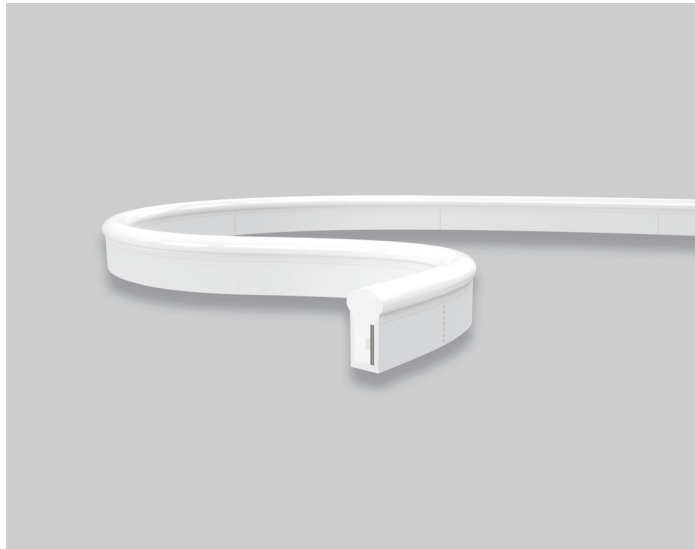


SF21 Tunable White Silicone LED Linear Flex

SF21-24V-2835-120-DW

Specification

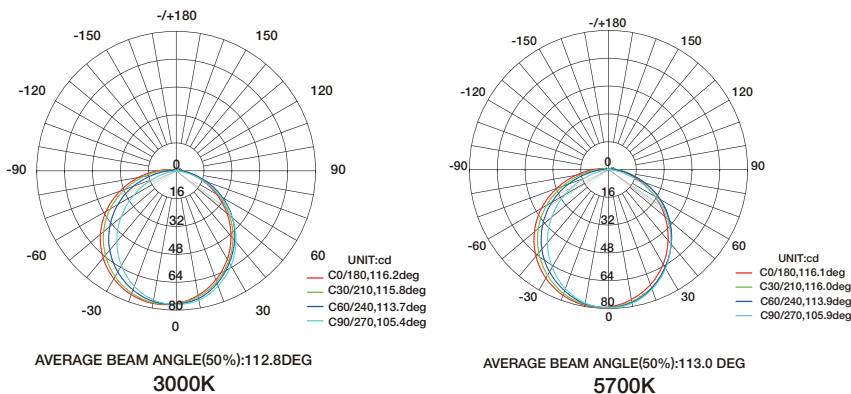


Technical Parameters

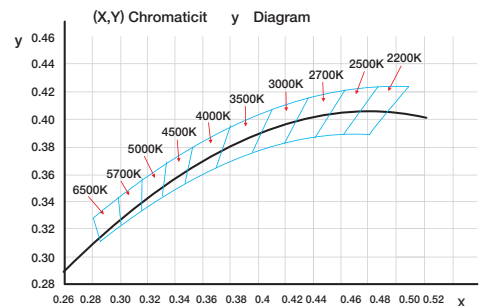
Electrical	
Input Voltage	24V DC
Power Consumption	15W/m
Physical	
LED Count	120 LEDs/m
Cutting Unit	12 LEDs
Cutting Unit Length	100mm
Minimum Bend Diameter	80mm
Output	
LED Light	Epistar SMD LED 2835
CRI	>80, >90
Max Run Length*	
Single Feed	10M
Double Feed	20M
Beam Angle	270°
Lumen Maintenance	70,000 Hours L70 @ 25°C 50,000 Hours L70 @ 50°C
Temperature Ranges	
Installation	0°C to 50°C
Operating	-40°C to 55°C
Dependability	
Warranty	5 Years Warranty
IP Rating	IP68 Wet location submersible <2m

Optional Color Combinations	Lumen Output
2200K+5700K	180lm/m+220lm/m
2700K+5700K	190lm/m+220lm/m
3000K+5700K	200lm/m+220lm/m

Illuminance Distribution



White Color Charts



SF21 Tunable White Silicone LED Linear Flex

Connection

