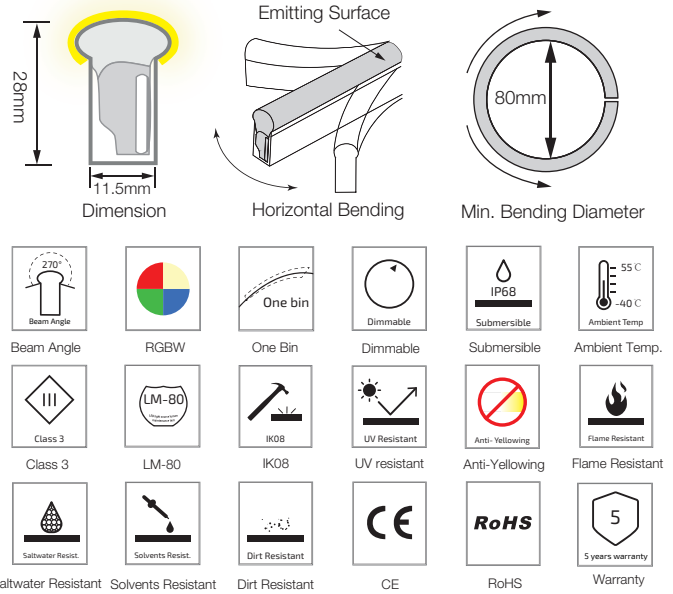
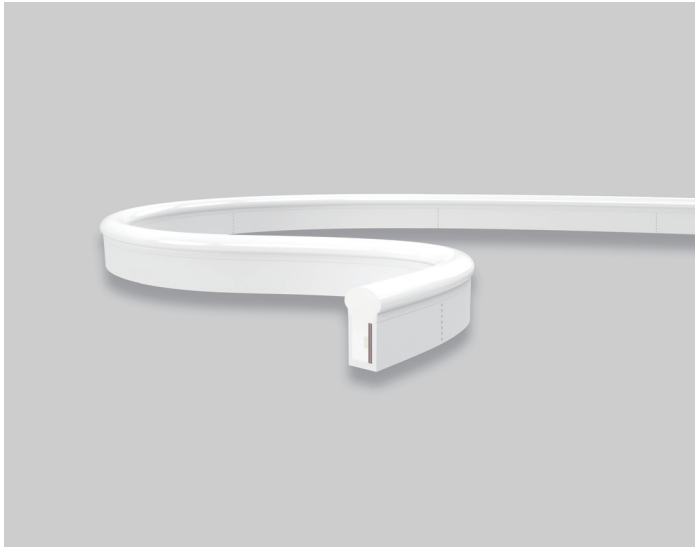


# SF21 Multi Color RGBW Silicone LED Linear Flex

## SF21-12V-5050-60-RGBW

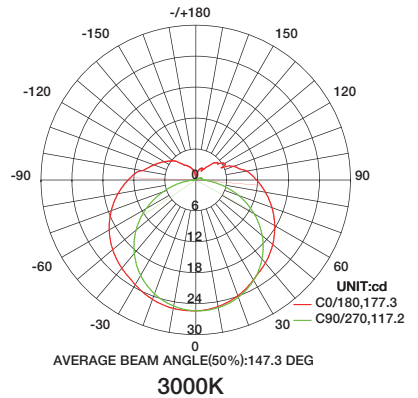
### Specification



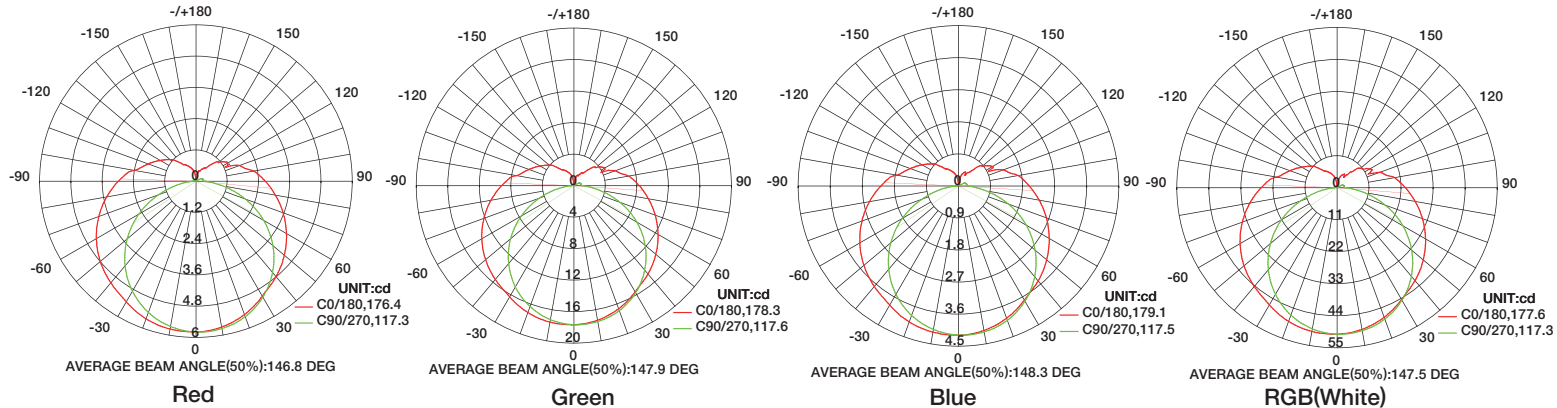
### Technical Parameters

| Electrical            |  |
|-----------------------|--|
| Input Voltage         | 12V DC   |
| Power Consumption     | 17W/m  |
| Physical              |  |
| LED Count             | 60 LEDs/m  |
| Cutting Unit          | 3 LEDs   |
| Cutting Unit Length   | 50mm   |
| Minimum Bend Diameter | 80mm   |
| Output                |  |
| LED Light             | Epistar SMD LED 5050                               |
| Color                 | RGBW(2700K/3000K/4000K/5000K)                      |
| Max Run Length*       |  |
| Single Feed           | 5M   |
| Beam Angle            | 270°   |
| Lumen Maintenance     | 70,000 Hours L70 @ 25°C<br>50,000 Hours L70 @ 50°C |
| Temperature Ranges    |  |
| Installation          | 0°C to 50°C  |
| Operating             | -40°C to 55°C                                      |
| Dependability         |  |
| Warranty              | 5 Year Warranty                                    |
| IP Rating             | IP68 Wet location submersible <2m                  |

| Emitting Color | Lumen Output |
|----------------|--------------|
| Red            | 22lm/m       |
| Green          | 75lm/m       |
| Blue           | 15lm/m       |
| RGB(White)     | 220lm/m      |
| 3000K          | 100lm/m      |



### Illuminance Distribution



# SF21 Multi Color RGBW Silicone LED Linear Flex

## Connection

