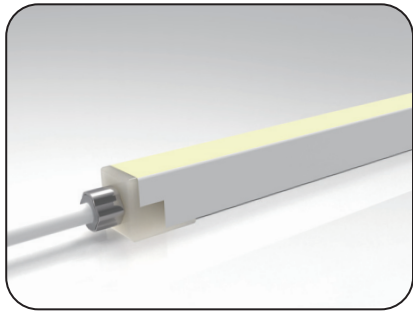
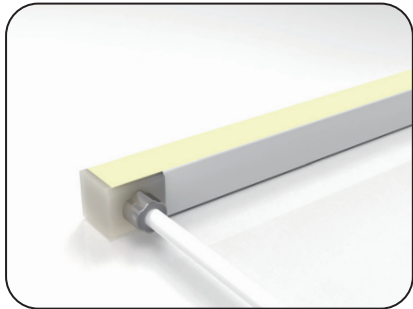
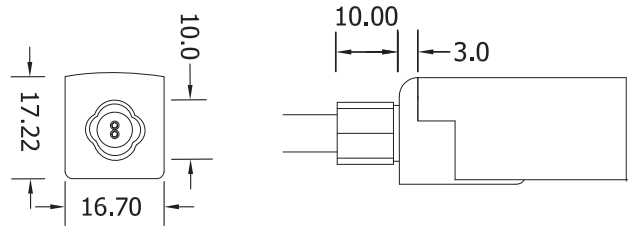


SF10 Configuration and Accessories

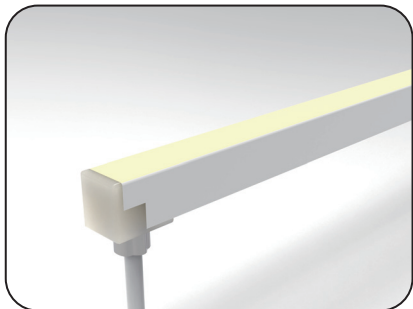
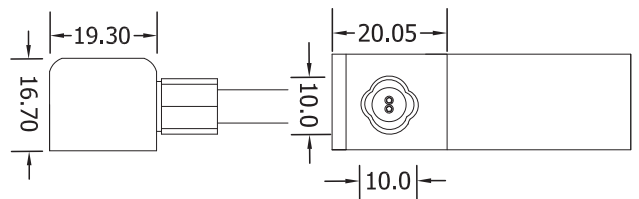
Mold Injection Connector (IP68 Factory Assembly Only)



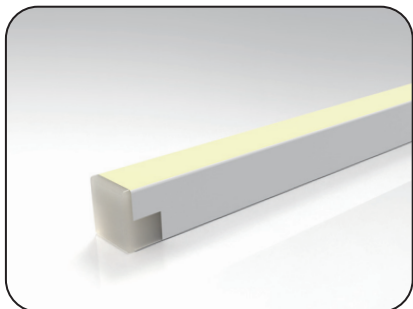
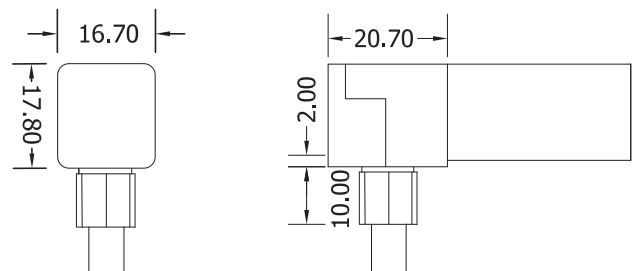
Direct Entry Connector
 MJ-SF10-A-D01/02/03
 MJ-SF10-A-D01SM
 MJ-SF10-A-D02SF
 MJ-SF10-A-D03SFM



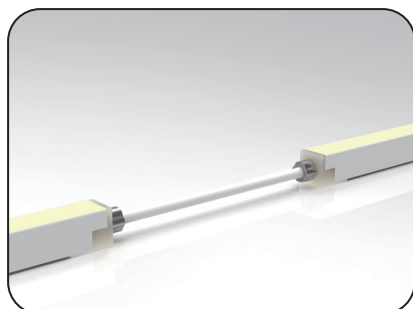
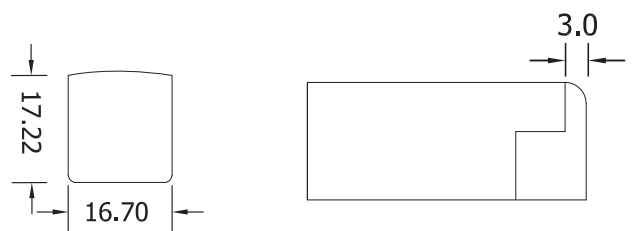
Side Entry Connector
 MJ-SF10-A-S01/02/03
 MJ-SF10-A-S01SM
 MJ-SF10-A-S02SF
 MJ-SF10-A-S03SFM



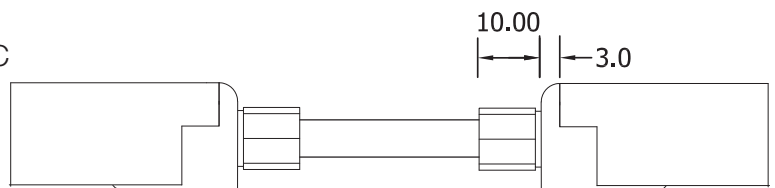
Bottom Entry Connector
 MJ-SF10-A-S01/02/03
 MJ-SF10-A-S01SM
 MJ-SF10-A-S02SF
 MJ-SF10-A-S03SFM



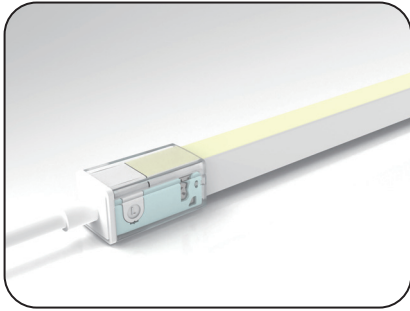
End Cap



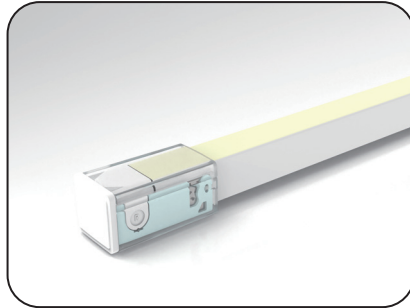
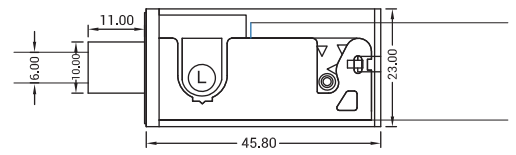
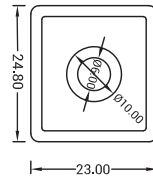
Jumper
 MJ-SF10-A-D-JC



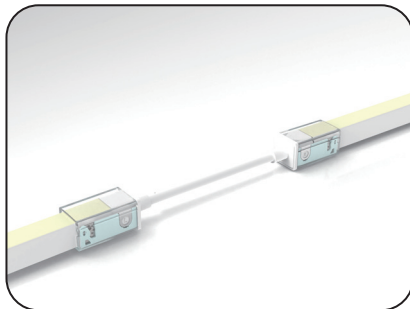
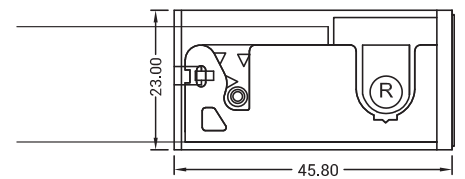
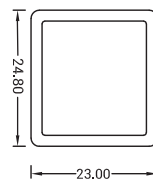
SF10 Configuration and Accessories



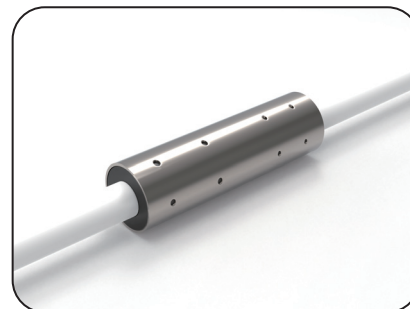
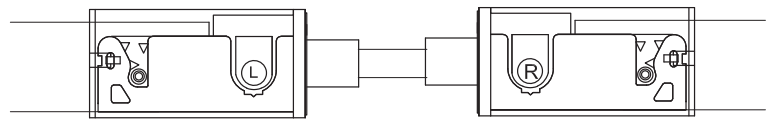
DIY Snap Connector
DIY-SN-FR-10-D-01/02-A



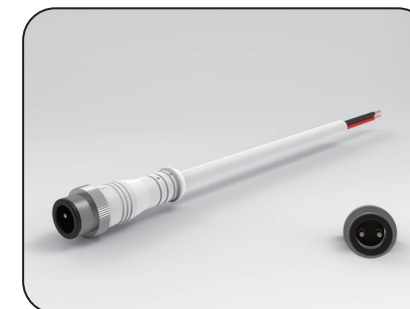
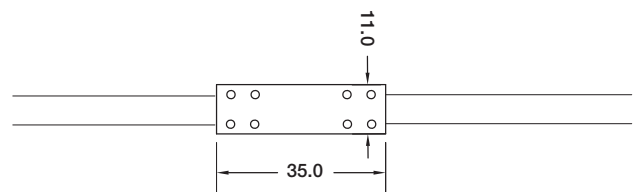
DIY Snap End Cap
DIY-SN-END-10-D-01/02



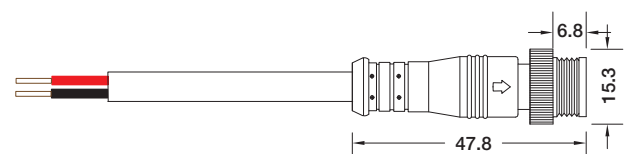
DIY Snap Connector Jumper
DIY-SN-FR-10-A-D-JC



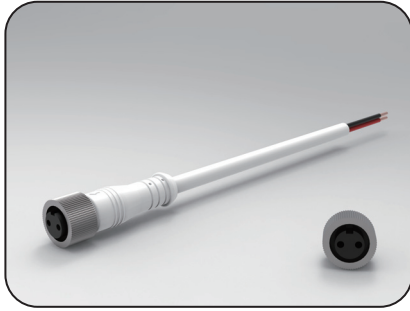
Waterproof Interrupter



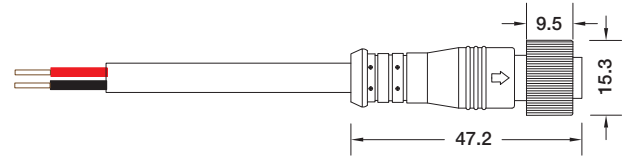
Male Connector
SYZ-M12-M-2C-075-W



SF10 Configuration and Accessories

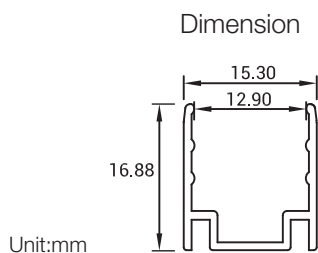
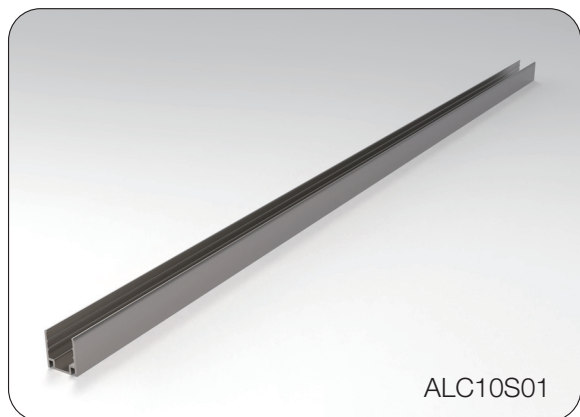


Female Connector
SYZ-M12-F-2C-075-W

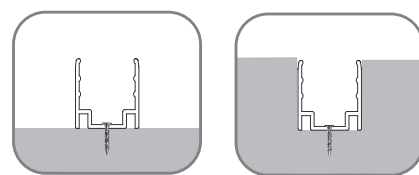


LED linear Flex Mounting Channel

1. Aluminum Channel

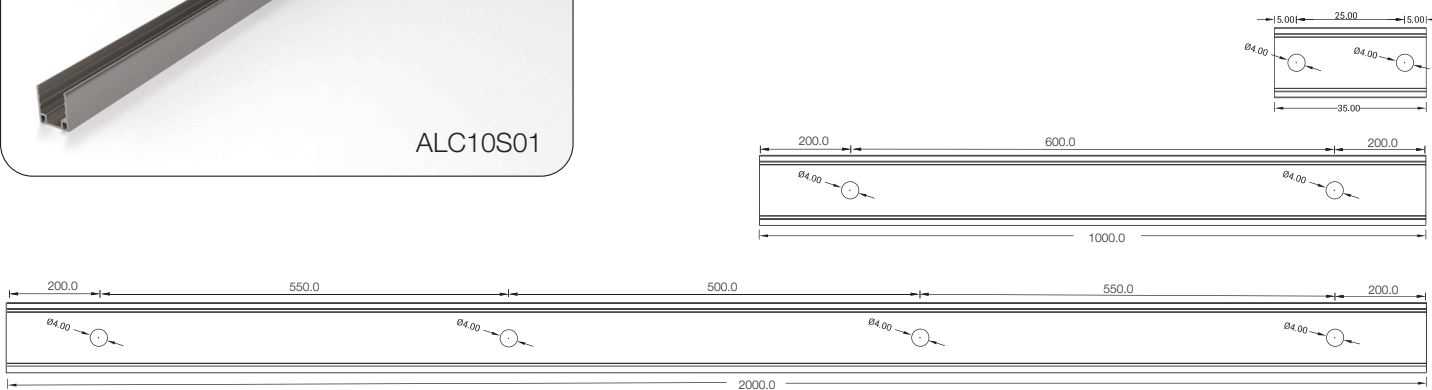


Installation Way



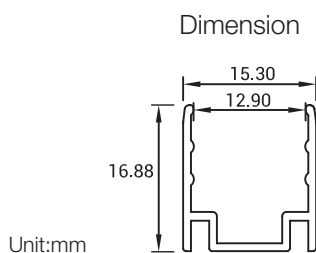
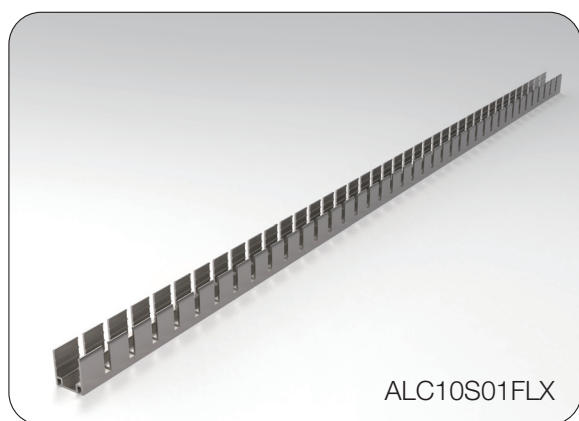
Surface Mounted

Recessed

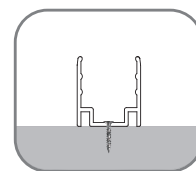


| Model | W x H(mm) | Standard Length | Screw Holes | Holes Numbers | Suitable Product |
|----------|------------|-----------------|-------------|---------------|------------------|
| ALC10S01 | 15.3*16.88 | 35mm | Ø4.0mm | 2 | T10, SF10 |
| | | 1000mm | Ø4.0mm | 2 | T10, SF10 |
| | | 2000mm | Ø4.0mm | 4 | T10, SF10 |

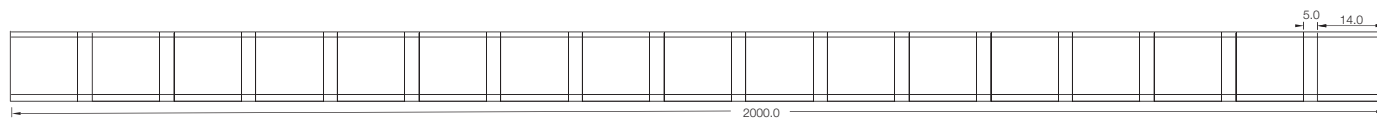
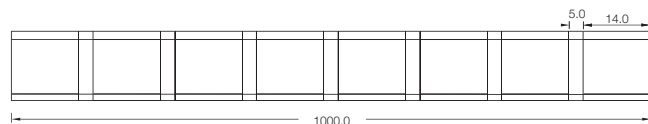
2. Flexible Aluminum Channel



Installation Way



Surface Mounted



| Model | W x H(mm) | Standard Length | Suitable Product |
|-------------|-------------|-----------------|------------------|
| ALC09S01FLX | 15.30*16.88 | 1000mm | T10, SF10 |
| | | 2000mm | T10, SF10 |

LED linear Flex Packing Details

Standard: Carton (Paper Reel Inside)



| Product | Max.Length | Carton Size | Net Weight | Gross Weight |
|-----------|------------|-------------|------------|--------------|
| S15/SF15 | 30m | 34*34*18cm | 12kg | 13.6kg |
| T16/SF16 | 20m | 34*34*18cm | 8.6kg | 10.2kg |
| S17/SF17 | 20m | 34*34*18cm | 8.6kg | 10.2kg |
| T18/SF18 | 20m | 34*34*18cm | 8.6kg | 10.2kg |
| S21/SF21 | 20m | 34*34*18cm | 10.4kg | 12.0kg |
| T10/SF10 | 30m | 34*34*18cm | 9.6kg | 11.2kg |
| S09/SF09S | 35m | 34*34*18cm | 5.8kg | 7.4kg |
| S08/SF08 | 30m | 34*34*18cm | 7.2kg | 8.8kg |
| S06/SF06 | 30m | 34*34*18cm | 7.2kg | 8.8kg |

Custom: Carton (White Box+ Plastic Plate Inside)



| Product | Package 1 Dimension | Length | Gross Weight | Package 2 Dimension | Length | Gross Weight |
|----------|---------------------|--------|--------------|---------------------|--------|--------------|
| S15/SF15 | 38*38*3cm | 5m | 2.5kg | 45*55*3cm | 10m | 5kg |
| T16/SF16 | 38*38*3cm | 5m | 2.6kg | 51*61*4cm | 10m | 5.2kg |
| S17/SF17 | 38*38*3cm | 5m | 2.6kg | 51*61*4cm | 10m | 5.2kg |
| T18/SF18 | 38*38*3cm | 5m | 2.6kg | 51*61*4cm | 10m | 5.2kg |
| S21/SF21 | 38*38*3cm | 5m | 3.1kg | 51*61*4cm | 10m | 6.2kg |
| T10/SF10 | 38*38*3cm | 5m | 2.0kg | 45*55*3cm | 10m | 4kg |
| S09/SF09 | 38*38*3cm | 5m | 1.5kg | 45*55*3cm | 10m | 3kg |
| S08/SF08 | 38*38*3cm | 5m | 1.5kg | 45*55*3cm | 10m | 3kg |
| S06/SF06 | 38*38*3cm | 5m | 1.5kg | 45*55*3cm | 10m | 3kg |