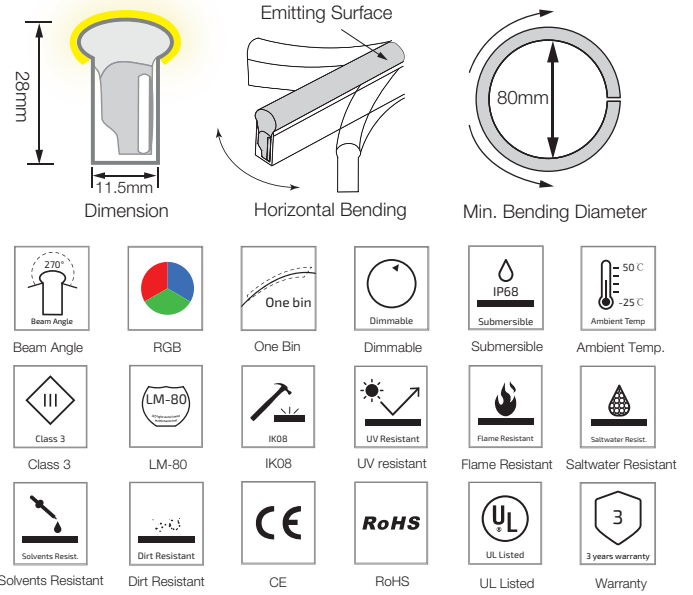
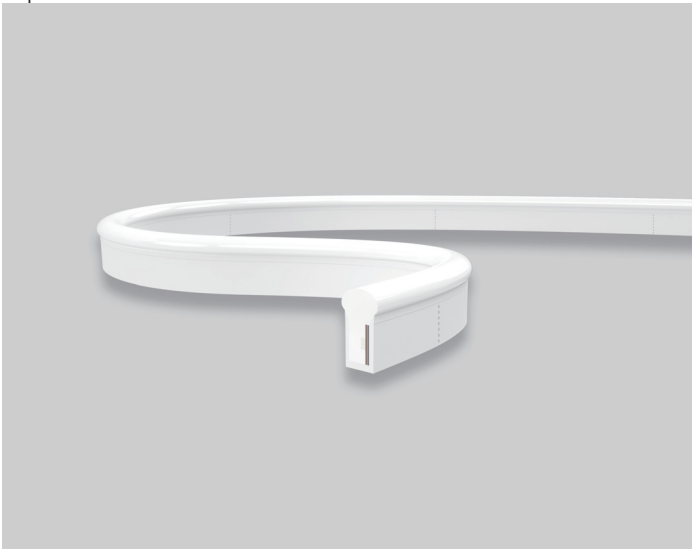


S21 Multi Color RGB LED Linear Flex




S21-24V-5050-60-RGB

Specification

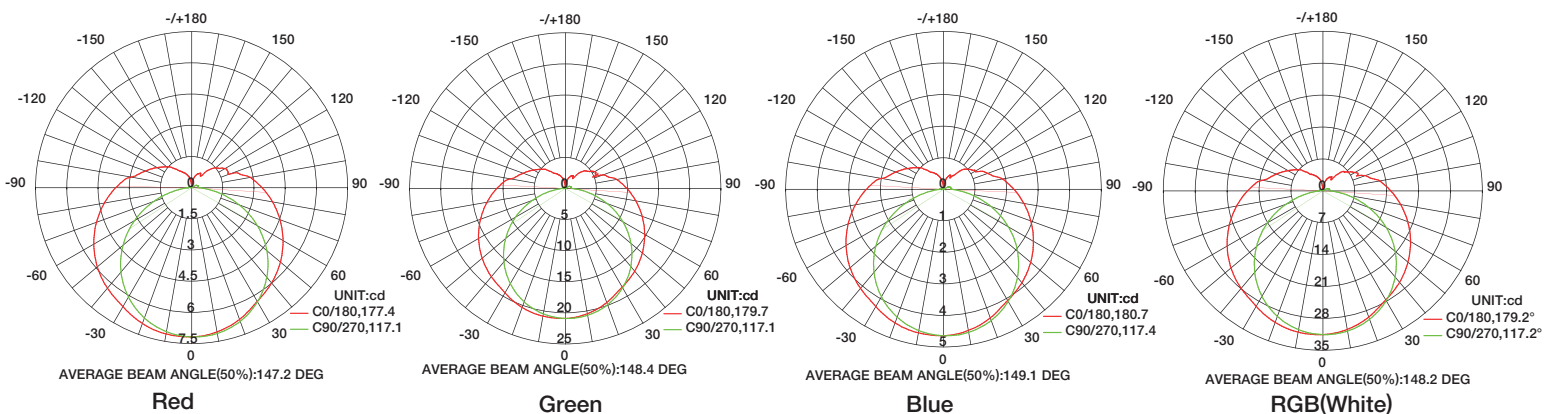


Technical Parameters

Electrical	
Input Voltage	24V DC
Power Consumption	12W/m
Physical	
LED Count	60 LEDs/m
Cutting Unit	6 LEDs
Cutting Unit Length	100mm
Minimum Bend Diameter	80mm
Output	
LED Light	Epistar SMD LED 5050
Color	RGB
Max Run Length*	
Single Feed	10M
Double Feed	20M
Beam Angle	270°
Lumen Maintenance	70,000 Hours L70 @ 25°C 50,000 Hours L70 @ 50°C
Temperature Ranges	
Installation	0°C to 50°C
Operating	-25°C to 50°C
Dependability	
Warranty	3 Years Warranty
IP Rating	IP68 Wet location submersible <2m

Emitting Color	Lumen Output
 Red	35lm/m
 Green	102lm/m
 Blue	23lm/m
 RGB(White)	155lm/m

Illuminance Distribution



S21 Multi Color RGB LED Linear Flex

Connection

FG (Green)
ACL (Brown)
AC/N (Blue)

