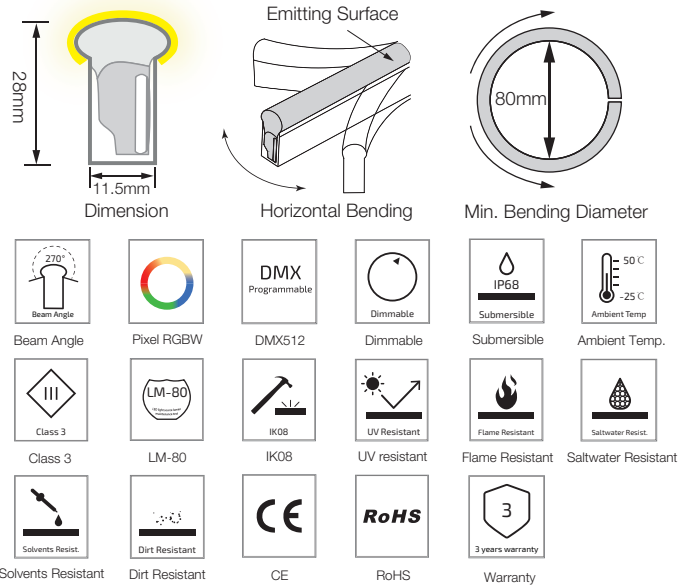
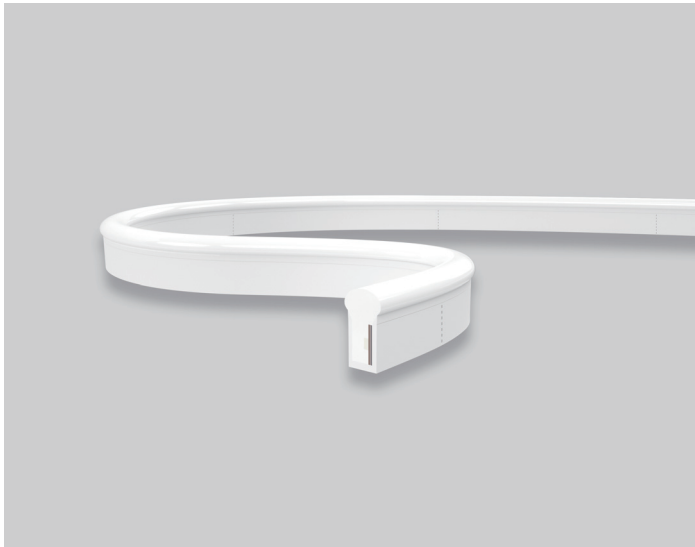


# S21 DMX Pixel Chasing RGBW LED Linear Flex

## S21-24V-5050-56-DMX4-RGBW

### Specification



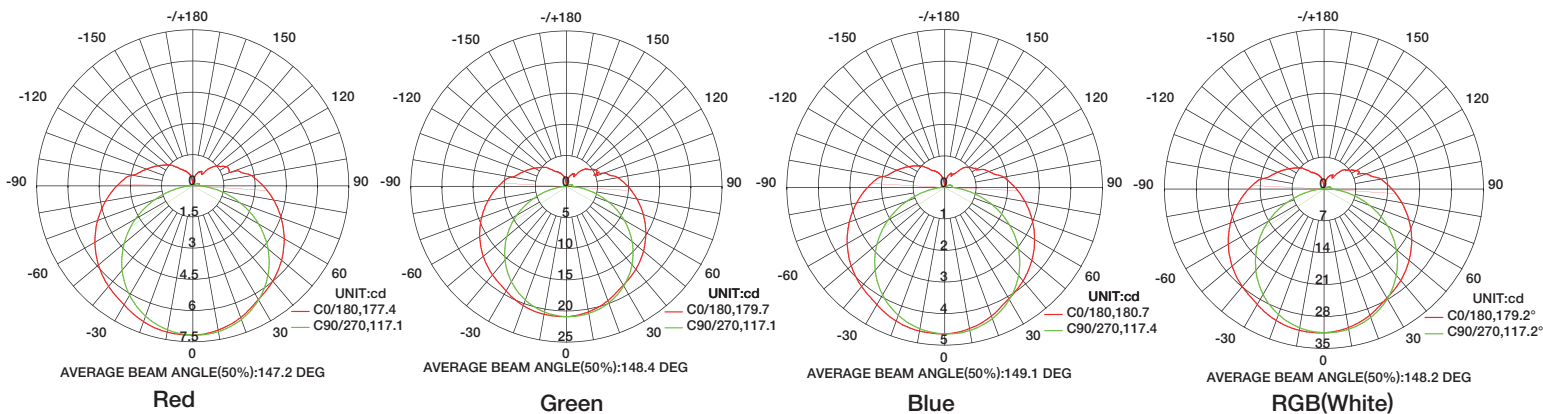
### Technical Parameters

Electrical	
Input Voltage	24V DC
Power Consumption	15W/m
Physical	
LED Count	56 LEDs/m
Cutting Unit	7 LEDs
Cutting Unit Length	125mm
Minimum Bend Diameter	80mm
Output	
LED Light	Epistar SMD LED 5050
Color	RGBW (2700K/3000K/4000K/5000K)
Working Mode	DMX (RS485)
Pixels Quantity	8 Pixels/m
IC Chips	UCS512
Max Run Length*	
Single Feed	10 M
Double Feed	20 M
Beam Angle	270°
Lumen Maintenance	70,000 Hours L70 @ 25°C 50,000 Hours L70 @ 50°C

Emitting Color	Lumen Output
 Red	35lm/m
 Green	105lm/m
 Blue	20lm/m
 RGB(White)	125lm/m
 3000K	100m/m

Temperature Ranges	
Installation	0°C to 50°C
Operating	-25°C to 50°C
Dependability	
Warranty	3 Years Warranty
IP Rating	IP68 Wet location submersible <2m

### Illuminance Distribution



# S21 DMX Pixel Chasing RGBW LED Linear Flex

