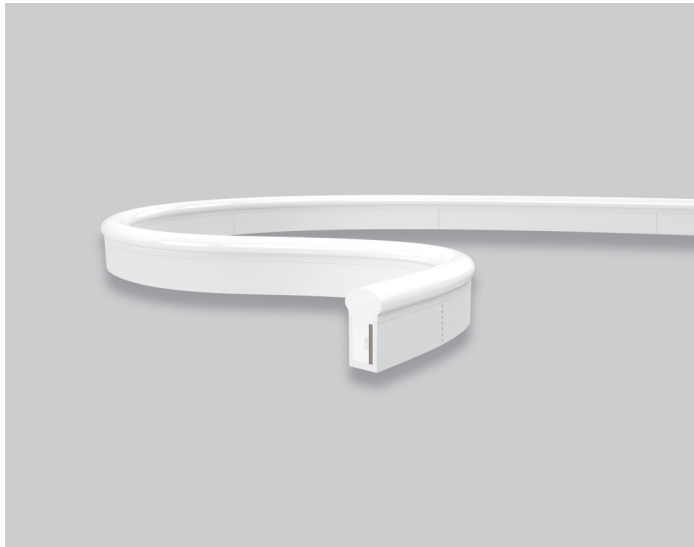


# S21 Mono Color LED Linear Flex

## S21-24V-3528-72-2200K-6500K

### Specification

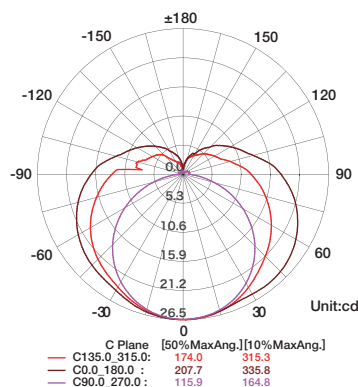


### Technical Parameters

Electrical	
Input Voltage	24V DC
Power Consumption	5W/m
Physical	
LED Count	72 LEDs/m
Cutting Unit	12 LEDs
Cutting Unit Length	166.7mm
Minimum Bend Diameter	80mm
Output	
LED Light	Epistar SMD LED 3528
CRI	>80, >90
Max Run Length*	
Single Feed	15M
Double Feed	30 M
Beam Angle	270°
Lumen Maintenance	70,000 Hours L70 @ 25°C 50,000 Hours L70 @ 50°C
Temperature Ranges	
Installation	0°C to 50°C
Operating	-25°C to 50°C
Dependability	
Warranty	3 Years Warranty
IP Rating	IP68 Wet location submersible <2m

Optional Color	Lumen Output
	2200K(2238±102K) 130lm/m
	2700K(2725±145K) 130lm/m
	3000K(3045±175K) 150lm/m
	3500K(3465±245K) 150lm/m
	4000K(3985±275K) 150lm/m
	4500K(4503±243K) 170lm/m
	5000K(5029±283K) 170lm/m
	6500K(6532±510K) 170lm/m
	Green(520-530nm) 70lm/m
	Blue (520-530nm) 13lm/m
	Red (620-630nm) 40lm/m
	Pink(630-645nm) 55lm/m
	Amber(585-595nm) 40lm/m
	Orange(600-610nm) 32lm/m

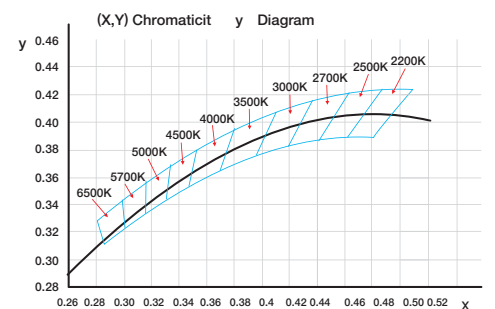
### Illuminance Distribution



Height	Center E	Average E	Diameter
3.281ft	2.456fc	0.012fc	125.396ft
1.0m	26.440lx	0.126lx	38.221m
6.562ft	0.614fc	0.003fc	250.792ft
2.0m	6.610lx	0.032lx	76.441m
9.843ft	0.273fc	0.001fc	376.188ft
3.0m	2.938lx	0.014lx	114.662m
13.123ft	0.154fc	0.001fc	501.584ft
4.0m	1.653lx	0.008lx	152.883m
16.404ft	0.098fc	0.000fc	626.980ft
5.0m	1.058lx	0.005lx	191.104m

Beam Angle: 174.0 DEG

### White Color Charts



# S21 Mono Color LED Linear Flex

## Connection

