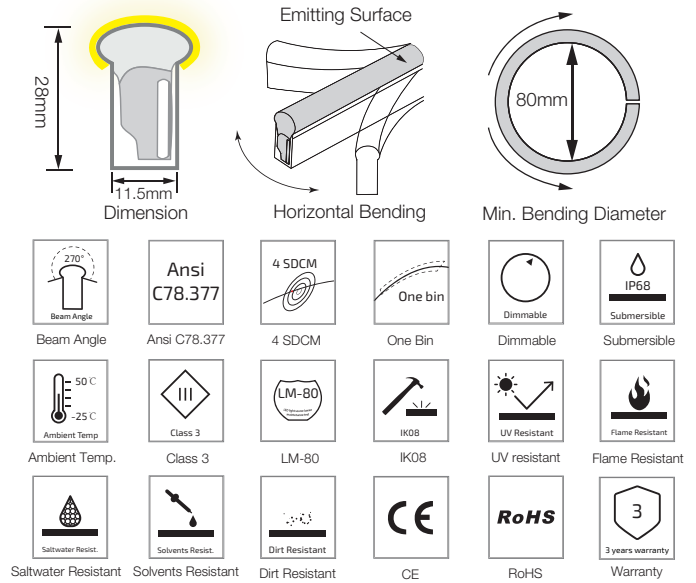
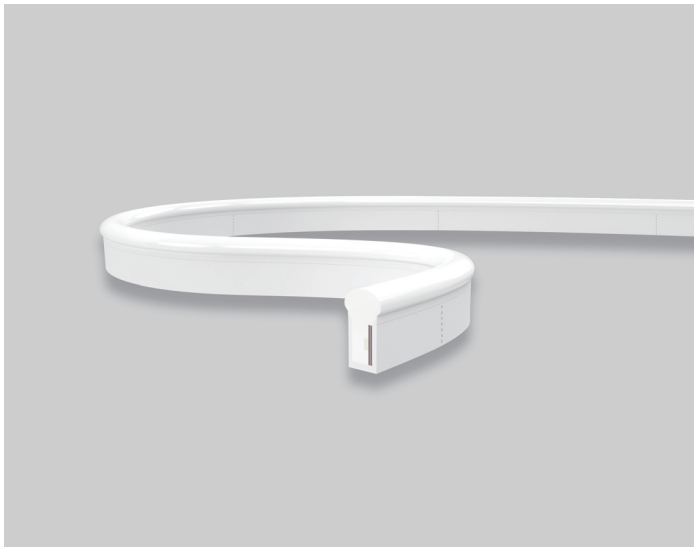


S21 Mono Color LED Linear Flex

S21-24V-2835-72-CC-2200K-6500K

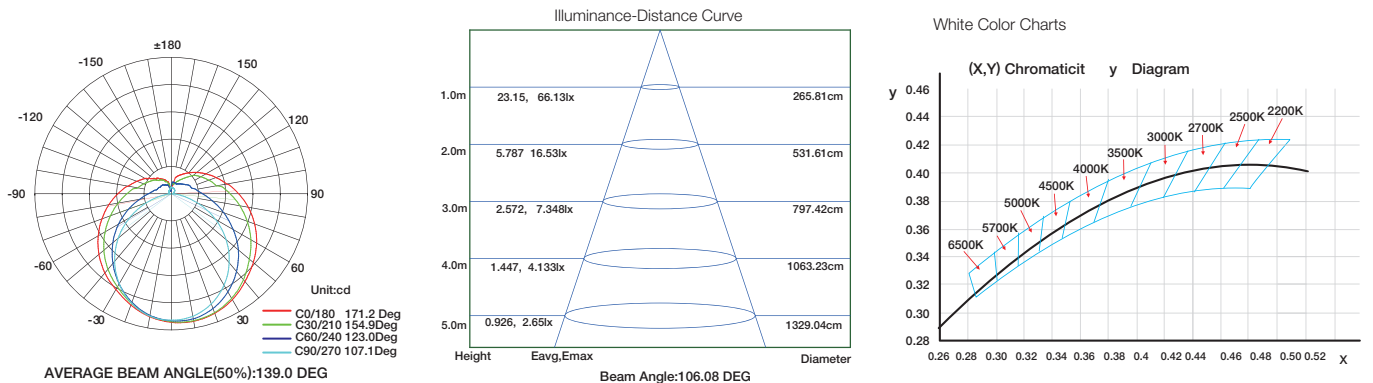
Specification



Technical Parameters

Electrical		Optional Color		Lumen Output	
Input Voltage	24V DC (Built In Constant Current)		2200K(2238±102K)	280lm/m	
Power Consumption	10W/m		2700K(2725±145K)	280lm/m	
Physical			3000K(3045±175K)	280lm/m	
LED Count	72 LEDs/m		3500K(3465±245K)	330lm/m	
Cutting Unit	6 LEDs		4000K(3985±275K)	330lm/m	
Cutting Unit Length	83.3mm		4500K(4503±243K)	350lm/m	
Minimum Bend Diameter	80mm		5000K(5029±283K)	350lm/m	
Output			Green(520-530nm)	200lm/m	
LED Light	Epistar SMD LED 2835		Blue (520-530nm)	35lm/m	
CRI	>80, >90		Lemon Yellow(520-530nm)	250lm/m	
Max Run Length*			Pink(630-645nm)	150lm/m	
Single Feed	15M				
Double Feed	30 M				
Beam Angle	270°				
Lumen Maintenance	70,000 Hours L70 @ 25°C 50,000 Hours L70 @ 50°C				
Temperature Ranges					
Installation	0°C to 50°C				
Operating	-25°C to 50°C				
Dependability					
Warranty	3 Year Warranty				
IP Rating	IP68 Wet location submersible <2m				

Illuminance Distribution



S21 Mono Color LED Linear Flex

Connection

