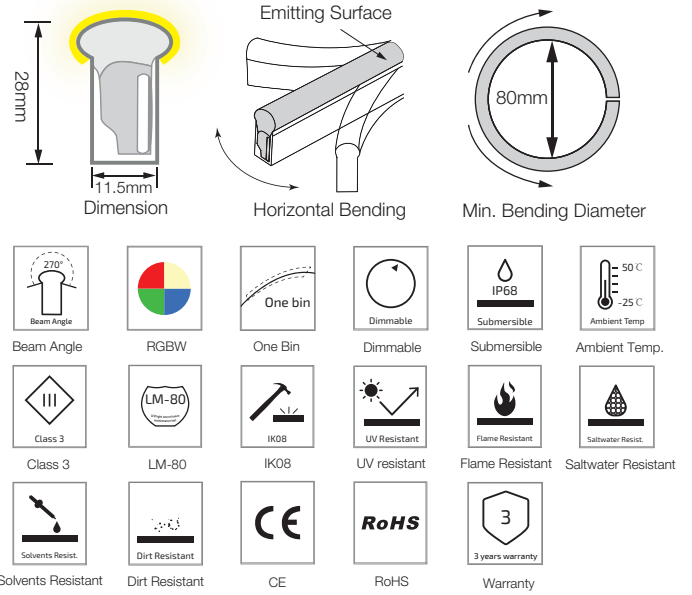
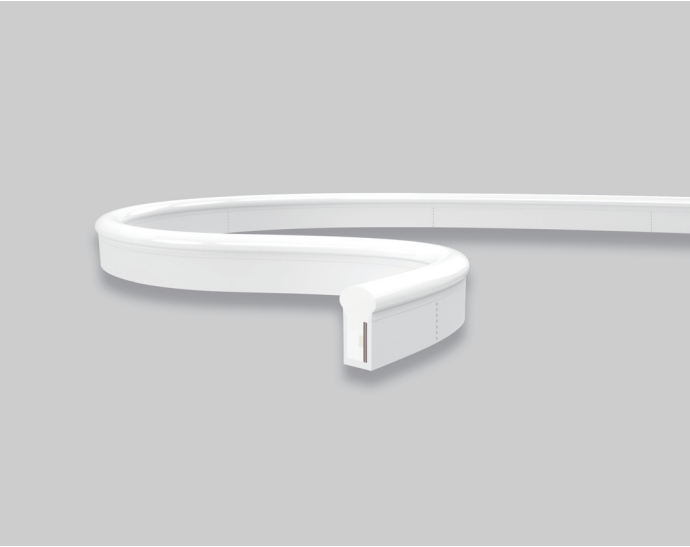


# S21 Multi Color RGBW LED Linear Flex

## S21-24V-5050-60-RGBW

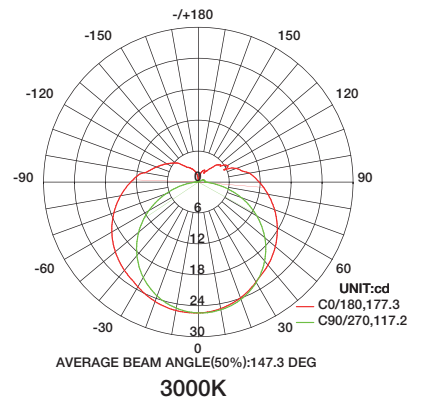
### Specification



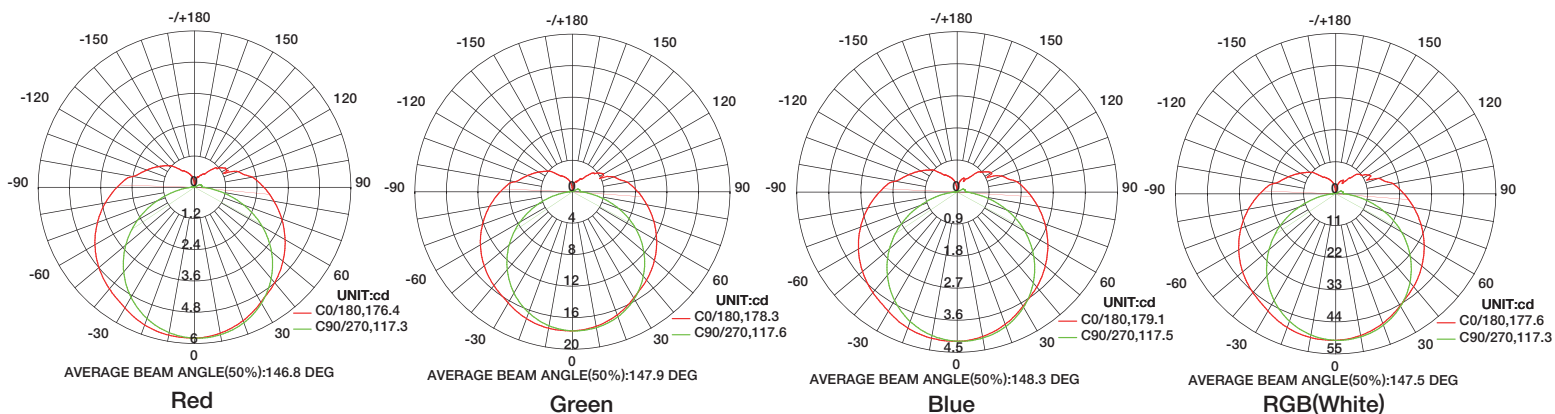
### Technical Parameters

Electrical	
Input Voltage	12V DC
Power Consumption	17W/m
Physical	
LED Count	60 LEDs/m
Cutting Unit	3 LEDs
Cutting Unit Length	50mm
Minimum Bend Diameter	80mm
Output	
LED Light	Epistar SMD LED 5050
Color	RGBW(2700K/3000K/4000K/5000K)
Max Run Length*	
Single Feed	5 M
Beam Angle	270°
Lumen Maintenance	70,000 Hours L70 @ 25°C 50,000 Hours L70 @ 50°C
Temperature Ranges	
Installation	0°C to 50°C
Operating	-25°C to 50°C
Dependability	
Warranty	3 Year Warranty
IP Rating	IP68 Wet location submersible <2m

Emitting Color	Lumen Output
Red	28lm/m
Green	86lm/m
Blue	20lm/m
White	246lm/m
3000K	120lm/m



### Illuminance Distribution



# S21 Multi Color RGBW LED Linear Flex

## Connection

