

Last information update: September 2021

Product configuration: BU17

BU17: Wall/ceiling mounted, ø110mm luminaire with an electronic transformer - Warm White - 360° radial effect

Product code

BU17: Wall/ceiling mounted, ø110mm luminaire with an electronic transformer - Warm White - 360° radial effect

Technical description

Wall and ceiling-mounted luminaire, complete with driver and designed for use with LED lamps and a patented 360° radial effect optic. The product consists of a support base and screen. The base is made of phosphocromatization treated, die-cast aluminium, with a double base coat and passivation at 120°C. It is coated with liquid acrylic paint, cured at 150 °C to guarantee a high level of weather and UV ray resistance. The screen is made of PMMA. All the screws used are made of A2 stainless steel.

Installation

Wall and ceiling mounted by means of a stainless steel wall fixture plate.

Colour

White (01)

Weight (Kg)

0.59

Mounting

wall surface|ceiling surface

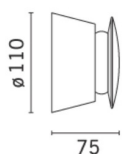
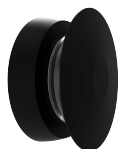
Wiring

Product supplied with an outlet cable L=200mm. Equipped with electronic ballast.

Notes

The chrome-coloured version of Trick (10) can only be used internally.

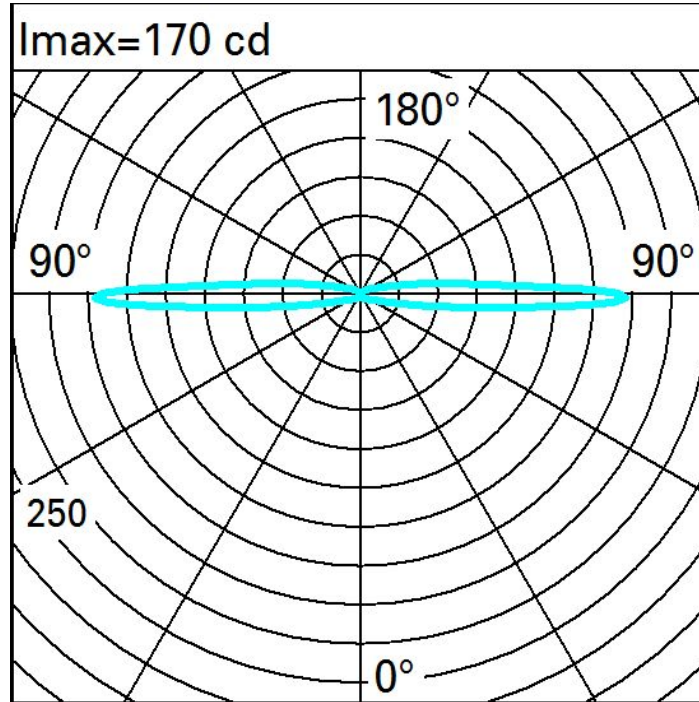
Complies with EN60598-1 and pertinent regulations



Technical data

lm system:	292	Life Time LED 1:	100,000h - L80 - B10 (Ta 25°C)
W system:	7.2	Life Time LED 2:	100,000h - L80 - B10 (Ta 40°C)
lm source:	810	Ballast losses [W]:	1.5
W source:	5.7	Lamp code:	LED
Luminous efficiency (lm/W, real value):	40.5	Number of lamps for optical assembly:	1
lm in emergency mode:	-	ZVEI Code:	LED
Total light flux at or above an angle of 90° [Lm]:	120	Number of optical assemblies:	1
Light Output Ratio (L.O.R.) [%]:	36	Ambient operating temperature range:	from -30°C to 50°C.
CRI (minimum):	80	Lifetime of product at ambient operating temperature:	≥ 50.000h Ta=40°C
Colour temperature [K]:	3000	Power factor:	See installation instructions
MacAdam Step:	3	Overvoltage protection:	2kV Common mode & 1kV Differential mode

Polar



Isolux

